

## BUSHING FOR WA600 KOMATSU LOADER

**KOMATSU**



The Komatsu WA600 Front Loader Bushing is a wear component designed to work at articulation and support points subjected to high loads, constant friction, and severe operating conditions.

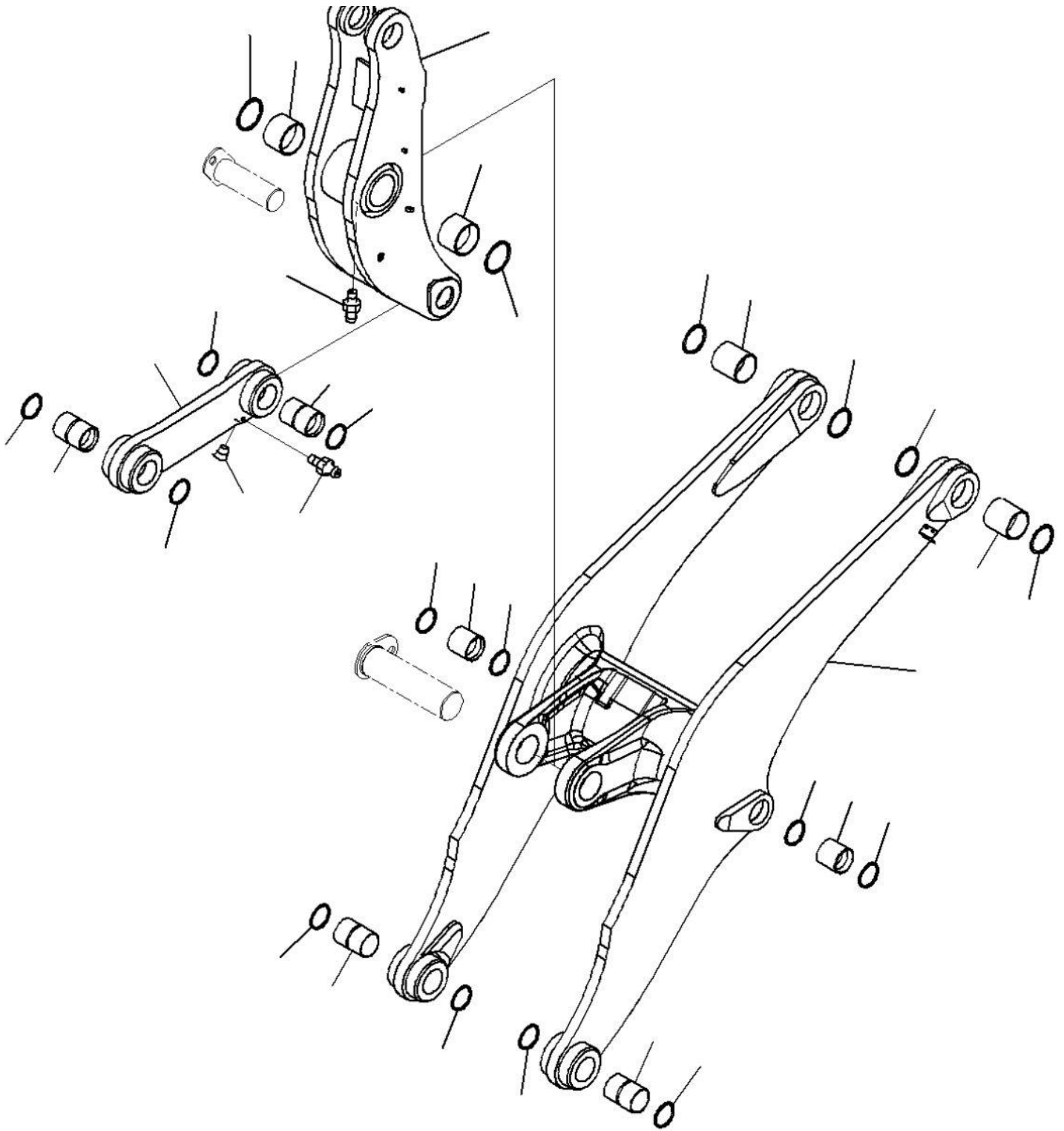


Its main function is to absorb mechanical stresses, reduce metal-to-metal wear and maintain the correct alignment of the moving assembly, prolonging the useful life of shafts, pins and equipment structures.



Imagen referencial





426-70-31760 Komatsu

